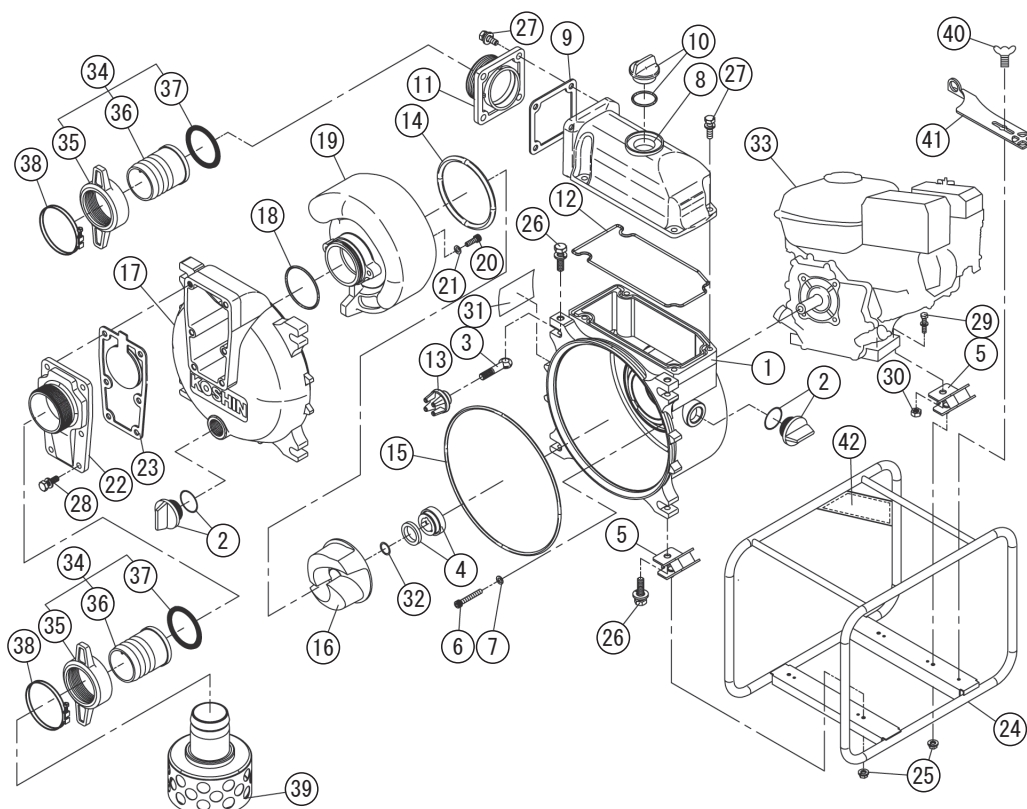


DWG No.012945401 MODELE : KTZ-80X FORM : KTZ-80X-BAA-0

| No. | PARTS CODE | PARTS NAME | QTY | MATERIAL/SIZE | REMARKS |
|-----|------------|---------------------|-----|---------------|---------|
| 1 | 0122946 | PUMP CASING | 1 | ADC | |
| 2 | 0118079 | 25A PLUG SET | 2 | | |
| 3 | 0115580 | COVER BOLT | 4 | | |
| 4 | 0115678 | MECHANICAL SEAL | 1 | | |
| 5 | 0116172 | CUSHION RUBBER | 4 | CR 60° | |
| 6 | 0116516 | SOCKET BOLT | 4 | SCM M8X55 | |
| 7 | 0116493 | WASHER | 4 | A1100 PH14 | |
| 8 | 0115547 | DELIVERY HOUSING | 1 | ADC | |
| 9 | 0123206 | FLANGE PACKING | 1 | CR | |
| 10 | 0118450 | 32A PLUG SET | 1 | | |
| 11 | 0115838 | DELIVERY FLANGE (G) | 1 | ADC | |
| 12 | 0123207 | HEAD PACKING | 1 | NBR | |
| 13 | 0115590 | KNOB | 4 | | |
| 14 | 0123217 | CASING PACKING | 1 | NBR | |
| 15 | 0123208 | FRONT COVER PACKING | 1 | NBR | |
| 16 | 0115558 | IMPELLER | 1 | HRFC | |
| 17 | 0121900 | FRONT COVER | 1 | ADC | |
| 18 | 0115676 | O-RING | 1 | NBR | |
| 19 | 0121908 | VOLUTE CASING | 1 | FCD450 | |
| 20 | 0121539 | SOCKET BOLT | 3 | SUS M8X35 | |
| 21 | 0121540 | WASHER | 3 | | |
| 22 | 0111573 | SUCTION FLANGE (G) | 1 | ADC | |
| 23 | 0115692 | CHECK VALVE PACKING | 1 | NBR | |
| 24 | 0127326 | BASE SET | 1 | | |
| 25 | 842319008 | SPRING NUT | 4 | SWRM M8 | |
| 26 | 743119083 | BOLT | 4 | SWRM M12×45 | |
| 27 | 743119063 | BOLT | 8 | SWRM M10×30 | |
| 28 | 743119061 | BOLT | 6 | SWRM M10×25 | |
| 29 | 743119065 | BOLT | 2 | SWRM M10×35 | |
| 30 | 827419010 | NUT | 2 | SWRM M10 | |

♦ Bare engine can not be supplied



DWG No.012945401 MODELE : KTZ-80X FORM : KTZ-80X-BAA-0

| No. | PARTS CODE | PARTS NAME | QTY | MATERIAL/SIZE | REMARKS |
|-----|------------|------------------|-----|---------------|---------|
| 31 | 0123342 | NAME PLATE | 1 | | |
| 32 | 0110081 | ADJUSTING WASHER | 3 | T0.3 | |
| 33 | 0123338 | ENGINE | 1 | K300-C0-P | |
| 34 | 0127312 | COUPLING SET | 2 | | |
| 35 | 0114375 | COUPLING | 2 | ABS | |
| 36 | 0110301 | NIPPLE | 2 | ABS | |
| 37 | 0123216 | COUPLING PACKING | 2 | NBR | |
| 38 | 940407090 | HOSE BAND | 3 | 3" | |
| 39 | 0110978 | STRAINER | 1 | SPC | |
| 40 | 741305153 | WING BOLT | 1 | SUS M8X15 | |
| 41 | 0115767 | TOOL | 1 | SPC | |
| 42 | 0122307 | SIDE PANEL LABEL | 1 | | |

◆ Bare engine can not be supplied